

Chapter 1 ❖ Installation

Check For These Items

The audio card requires a free PCI slot and Windows 95/98/NT 4.0 (with Service Pack 3) or Windows 2000. Before getting started, make sure you have each of the components listed below.

- Audio card
- User's manual
- Windows 95/98 **OR** Windows NT/Windows 2000 driver diskette
- Antex Application Programs diskette

You will also need the appropriate cable for your particular model audio card. The SC22 is provided with all necessary cables. Connector pinouts provided in Chapter 3 allow manufacture of custom cables, or the following cables may be purchased directly from Antex.

Table 1-1 Cabling Specifications for Antex Audio Cards

Audio card	Required cable(s)	Product Number
LX22m/SC22	2 in / 2 out balanced XLR	210-0413
LX24m	2 in / 4 out balanced XLR	210-0412
LX44	4 in / 4 out balanced XLR	210-0382
BX44	4 in / 4 out balanced XLR	210-0382
	Digital I/O, MIDI, LTC cable	210-0393
	Composite video cable assembly	210-0397

Installing Your Audio Card

Please read the cautions below before installing your audio card. Then complete the instructions that follow.



CAUTION: Static electricity can damage your audio card and your computer. Every time you move, you are creating static electricity, even though you can't see it. Therefore, take the following precautionary actions while installing your audio card:

1. Do not remove the audio card from its anti-static bag until instructed to during the installation process.
2. Move the audio card and its cables in close proximity to your computer. Once you begin the installation process, do not walk around with the audio card so that you do not build up static electricity.
3. Power OFF your computer, then touch the non-painted backside to discharge static electricity from your body before touching the circuit board.

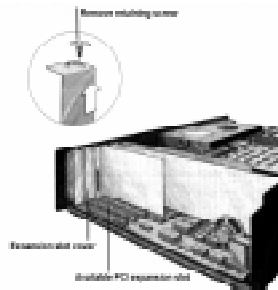


CAUTION: The XLR outputs of the audio card may be damaged if connected to microphone inputs that provide phantom power. The audio card outputs are designed to be connected to equipment that accepts high level sources, not low level microphone inputs! Severe damage will occur to the audio card if connected to phantom power.

Step 1 Power off your computer (if you have not already done so) and unplug the power cord from the electrical outlet.

Step 2 Remove the housing from your computer to expose the motherboard, locate an available PCI expansion slot, and remove its cover, as is shown in the figure at right.

Be sure to keep the retaining screw as you will need it later.



Step 3 Gently insert the audio card into the PCI slot and secure it in place with the retaining screw.

Step 4 Replace the cover, secure it with the screws you removed earlier, plug it in, power it on, then install the Antex drivers following the instructions on the next page.

Installing NT Drivers

Instructions for installing Antex drivers from Windows are shown below. Instructions for installing Antex drivers using an OEM Silent Method begin on page 4.

- Step 1** Insert the Drivers diskette into your floppy drive, click the **Start** button and choose **Run**.
- Step 2** Type **A:\SETUP** (or **B:\SETUP**), then click OK and follow the on-screen instructions to complete driver installation.
- Step 3** At the Antex Audio Drive Setup window, shown below, select your model audio card (Adapter) then specify the number of devices for that adapter.



If you are installing **more than one** audio card (Adapter), set the number of devices for the first card. Click an adapter in the **Select Adapter** group (for example **2**), select audio card, then select the number of devices for each until you have set the devices for all adapters. No jumpers settings are required on the cards for multiple adapter installations as were required for ISA based cards.

- Step 4** Click **OK** to complete the drivers and software installation. The Setup program will automatically configure the I/O port and interrupt.
- Step 5** Install the Antex Application Programs following the instructions beginning on page 7.



Be sure to check Antex's web site periodically for the latest audio card drivers. Our web address is www.antex.com.

**NT Driver
Installation
(OEM Silent
Method)**

The driver for the audio card may be installed from a command line prompt or from another application. This procedure allows an OEM to install the driver for the audio card in an automated way, requiring no user intervention.

Please note that minimal error checking is possible using this method. The Silent method of driver installation is not recommended as the standard method of installation for most users. Application software must be installed separately.

At the command prompt, type `setup` followed by the appropriate parameter strings:

`/a[adapter#] , [card Id] , [#devices] , [port] , [irq] , [srp]`

where:

card ID=ID of the audio card listed below (all listed for completeness)

#devices= configures 1 to max number of devices supported by card

port= 0 for PCI cards, port address for ISA cards

irq= 0 for PCI cards, IRQ for ISA cards

srp= normally 1, 0 turns SRP off

Table 1-2 Card IDs for supported Antex audio cards

Model	Card ID	Model	Card ID
AV2394	38	SX20	16
AV2413	43	SX22	21
BX12	45	SX23E	30
BX44	49	SX26	34
BX8	52	SX3	23
DGS7	20	SX33	28
DGS9	32	SX33B	37
LX22M	51	SX34	40
LX24M	50	SX35	41
LX44	47	SX36	44
SC2000	46	SX5E	36
SC22	48	SX6	42
SC4 (StudioCard)	39	SX7	17
SX11	33	SX9	24
SX12A	26	Z1	19
		Z1E	27

OEM silent installation examples

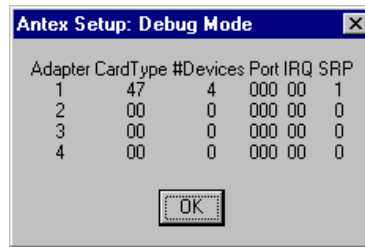
Example 1 In the following example, the adapter number is "1", the card ID is "30", the number of devices is "2", the port address is "0x180" and the IRQ setting is "5":

```
setup /a1,30,2,180,5
```

Example 2 In the following example, the adapter number is "1", the card being used is the BX-12, there are six devices running in display mode.

```
setup /a1,45,6 /d
```

Note that minimal error checking is done on the parameters. To minimize installation problems, you should use the /d parameter to verify command line entry. With the /d parameter, no installation is actually done. A dialog box, like the one shown at right, will appear allowing confirmation of input parameters.



Example 3 In the following example, the adapter number is "2", the card being used is the SX-23e, there are two devices, the port id is "0x180" and the IRQ is "5".

```
setup /a2,30,2,180,5
```

Example 4 In the final example, there are two cards. The first card adapter number is "1", the card being used is the SC4 (StudioCard), there are four devices running SRP mode. The second card adapter number is "2" and it is an SX-23e.

```
setup /a1,39,4,0,0,1 /a2,30,2,180,5
```

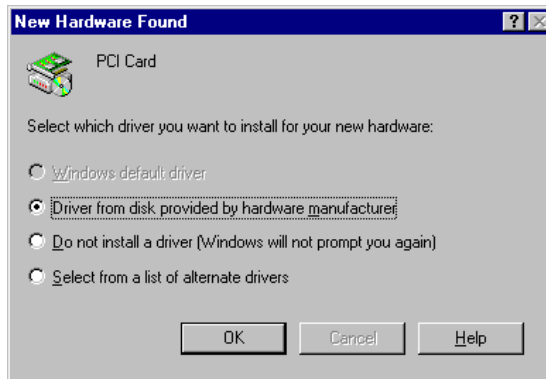
The final step in installing your audio card is to test its playback and recording capabilities following the *Final Testing* instructions beginning on page 7.

Windows 95/98 Driver Installation

To install the Windows 95/98 drivers, simply follow the step-by-step instructions below.

Please note that the **Antex Demo** and **Antex Mixer** are installed separately from the drivers in Windows 95/98. Installation instructions for these programs follow this section.

- Step 1** After installing the audio card, power on the computer. Windows 95/98 will recognize the new hardware, displaying the following window, asking you to install drivers for the audio card. Click the **Driver from disk provided by hardware manufacturer**, then click **OK**.



- Step 2** At the **Install From Disk** window, verify that the Windows 95/98 driver diskette is inserted into drive A (or B) then click **OK**.
- Step 3** At the **Select Device** window, click the card you are installing, then click **OK**.



- Step 4** Follow the on-screen instructions to finish the installation. After the driver(s) has been installed, Windows may ask you to reboot your system. Reboot your computer if asked.

Installing Antex Mixer, Demo and Meter

The audio card comes with three software tools to help you test and control your audio card(s):

- The **Antex Mixer** is a powerful patch bay, mixing console, and configuration tool for Antex audio cards designed to be used in conjunction with application software. The settings you specify in the Mixer define how the audio card operates. For example, using the Mixer you can change the volume of an audio file, select the audio input source or output destination, and capture audio in synchronization with video (BX44 and SC22).
- The **Antex Demo** is used primarily for testing Antex audio cards and demonstrating its capabilities. It allows you to record and play audio *.wav files from your hard drive.
- The **Antex Meter** is a convenient read-only display showing audio levels on the number of meters you choose to show.

To install these Antex software tools, insert the Antex Application Programs diskette into your floppy drive, then double-click the Setup file and follow the on-screen instructions.

Information on using these tools is provided in *Chapter 2: Antex Demo, Mixer and Meter*.

The final step in installing your audio card is to test its playback and recording capabilities, as described below.

Final Testing

Using the Antex Demo you will test your audio card's playback and recording capabilities. Follow the instructions below.

- Step 1** Connect Analog Outputs 1 and 2 to a preamplifier or mixing console, power amp, and speakers. Turn down the volume to a low level to avoid speaker damage.
- Step 2** Start **Antex Demo**, then click the **File** button in the bottom left hand corner of the Antex Demo and select a *.wav file to open.
- Step 3** Click **Play** to play the file.

During playback, Antex Demo indicates the current Sample Rate, Compression method, Playback level, and elapsed time. These parameters are stored in the .wav audio file and therefore cannot be changed during playback.

The audio that is output from analog outputs 1 and 2 is simultaneously available at the digital output connector (BX44 only). The default output format is AES/EBU Professional. If necessary, you can change it to S/PDIF Consumer using the **Antex Mixer**. See Chapter 3 for more information.

- Step 4** If you hear no output, check to make sure that all the cables are secure.



The meter display in Antex Demo displays levels from outputs 1 and 2 only. If a file is played on outputs 3 and 4, the file will play but the meters will not show levels.

Chapter 1 ❖ Installation

This Page Intentionally Left Blank