

Installing/Configuring the Antex XM-100 FTE Application v1.0.3

Note: The XM-100 receiver must contain firmware v6.30.126 or above in order for this application to function properly. If you require this feature, you will need a new XM-100 because there will be no upgrade option.

Hardware Requirements:

1. PC with an available Serial Port.
2. Null Modem Cable connected between the PC Serial Port and XM-100 with Firmware v6.30.126 or above.

Software Requirements Installed in this Order:

1. Windows XP Pro SP2 or above.
2. World Wide Web Service of Internet Information Service (IIS).
3. Microsoft .Net Framework 2.0 or above.
4. Once these Applications and Services have been installed you **MUST** do a Microsoft Update and install all High Priority updates.

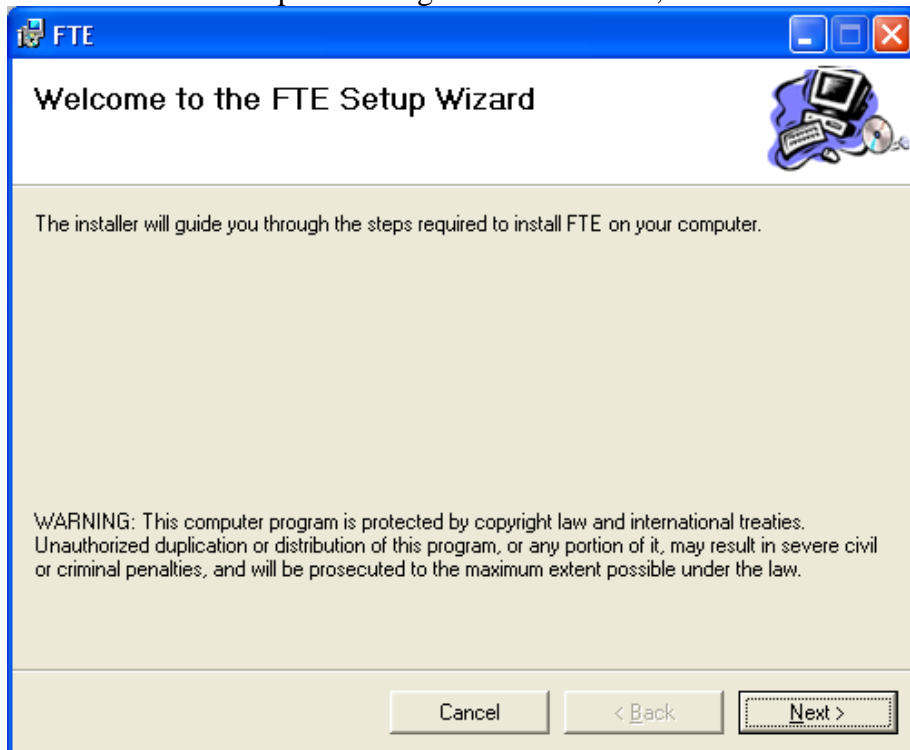
Note: Step 3 above is added via:

Control Panel->Add or Remove Programs->Add/Remove Windows Components

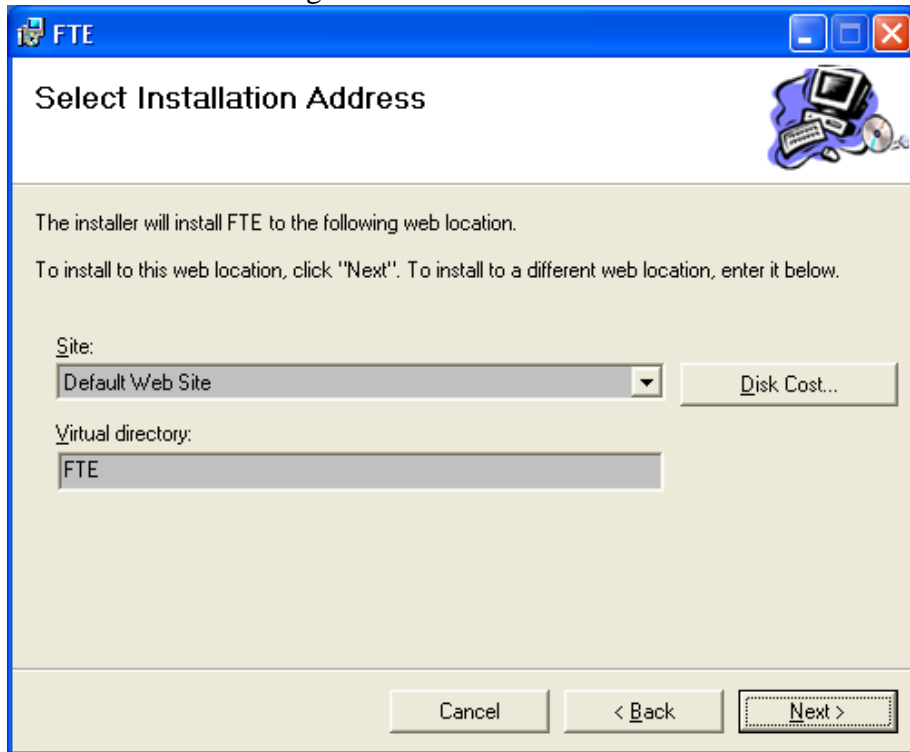
Once the above requirements have been met, you may begin with this installation and configuration of the XM-100 FTE Loader.

Installation:

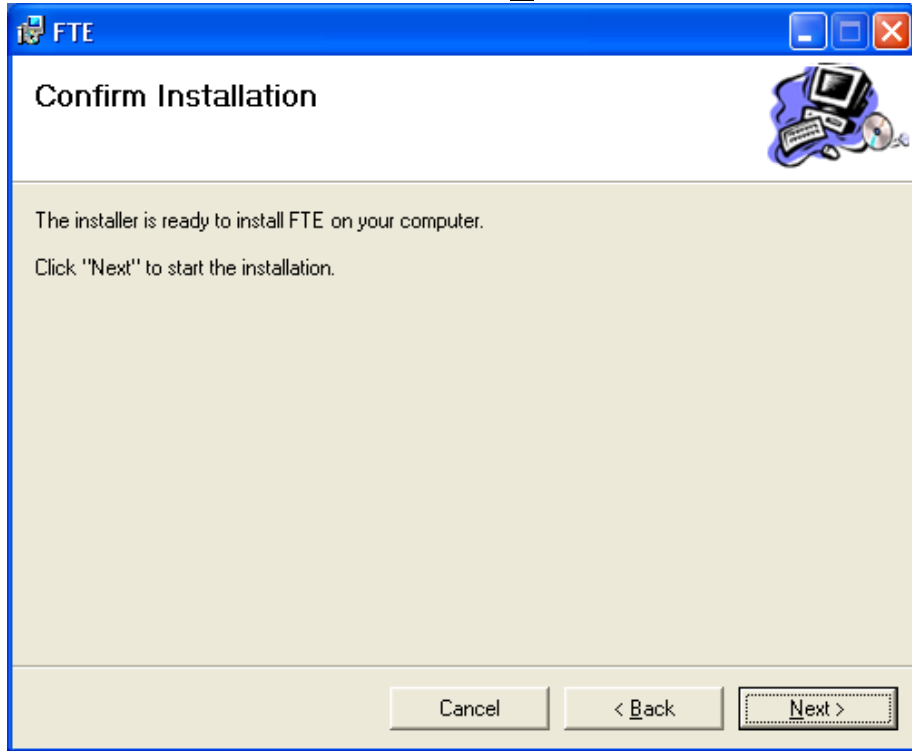
1. Open the XM100FTE folder.
2. Double click the setup.exe to begin the installation, click Next.



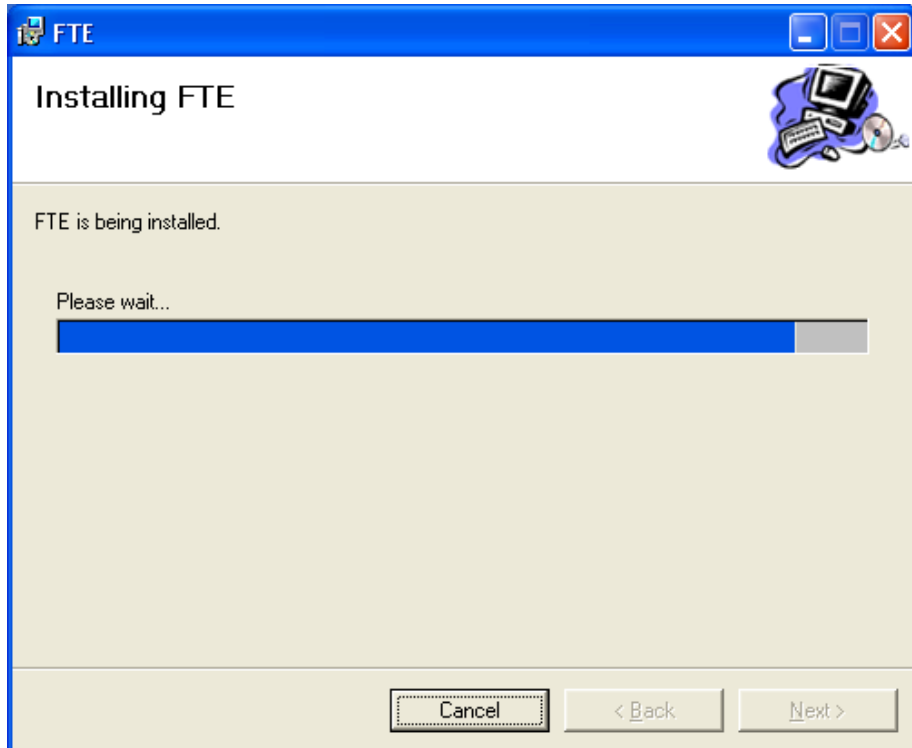
3. Select the default settings.



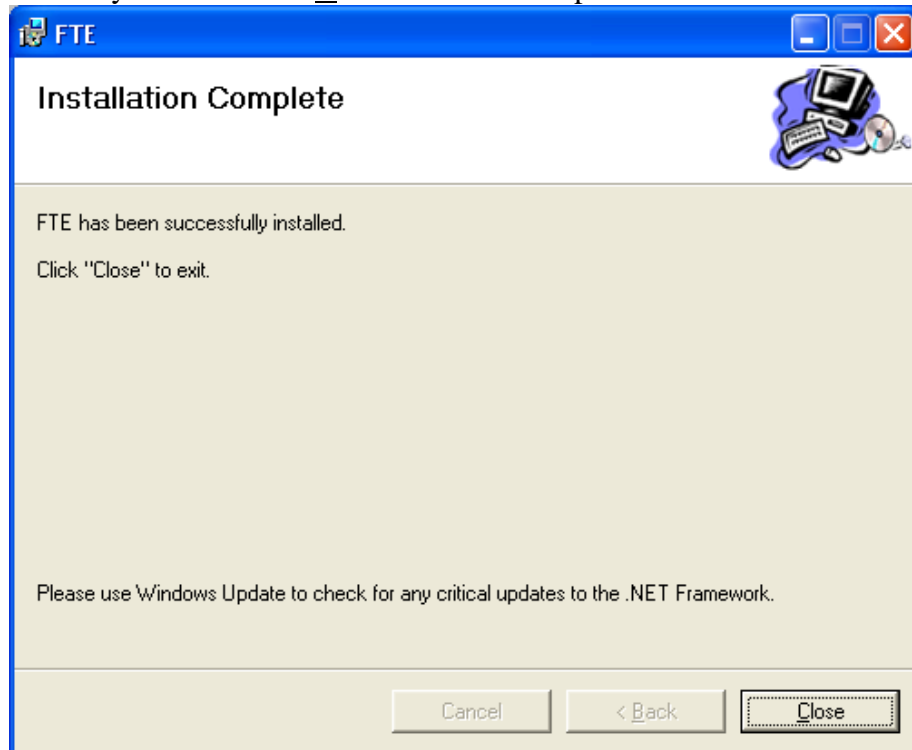
4. Confirm the Installation and then click Next>.



5. Installation Process.

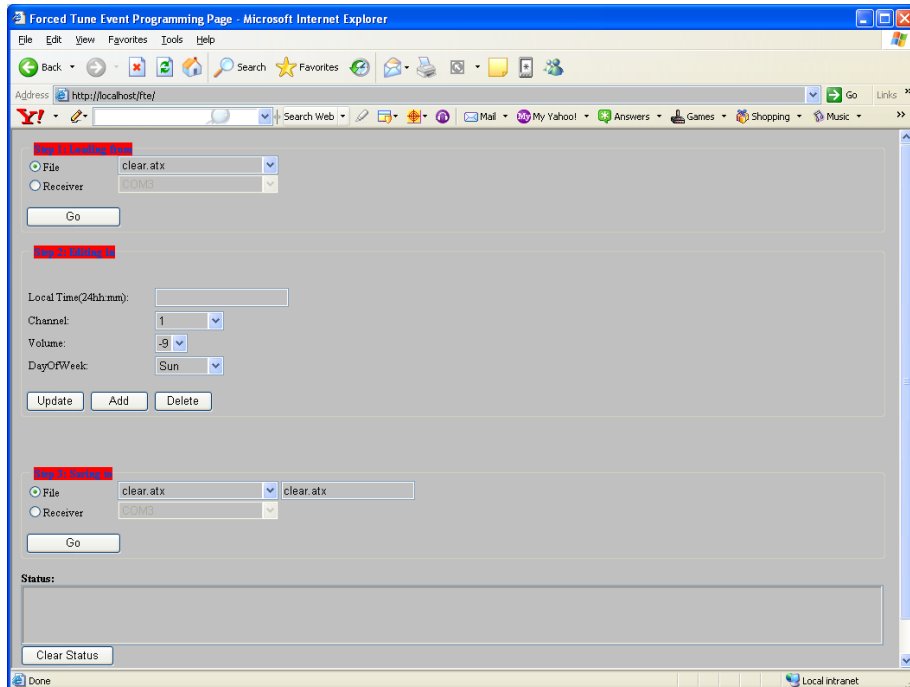


6. You may now click the Close button to complete the installation.



Running the XM-100 FTE Application:

1. Open a Browser Window.
2. Type <http://localhost/fte> and then press the enter key. You should get a window that looks similar to this one below.



3. **Step 1.** Here you can choose to load the default template provided by selecting the File option or read and see what the XM-100 is loaded with by selecting the Receiver option. 3-7 will show you how to work with Files. 10 will show you how to read from the XM-100 receiver and save those settings into an actual .atx file for future use. Select File and then drop down the window to select the default.atx file and then press the Go button
4. **Step 2.** This will load a default FTE Map which happens to contain two sample FTE's. You may begin to modify by adding, deleting or changing events to meet your needs.
5. **Adding an Event**
 - Type in the Local Time (24hh.mm): 09:00
 - Drop the window in Channel and select what Channel or Event you want the XM-100 to do.
 - Drop the window in Volume and select the Volume Level you want this event to be set at.
 - Drop the window in Day of Week and select what set of Days you want this event to take place
 - You may now press the Add button to add this new Event to the log.
 - Repeat the steps in 5 to add more events.
6. **Modifying an Event**
 - Look for the event you want to Modify and then click on Select.
 - Make the changes and then click on the Update button to apply.

7. **Deleting an Event**

- Look for the event you want to Delete and then click on Select.
- Click on the Delete button.

8. **Step 3.** Here you can save the changes to either a file (.atx) or the actual XM-100 receiver.

- If you select File, name it accordingly and then click on the Go button.
- If you select Receiver, just click the Go button to save all changes to the actual Receiver.
- The .atx files are saved in: c:\Inetpub\wwwroot\FTE\App_Data

9. The Status Window reports in the commands have been applied successfully or there were errors in the updates and/or loading.

10. Read FTE's stored on the XM-100

- Step 1 select Receiver and then the proper COM Port and then click on the Go button.
- Step 2 will display what is stored on the Receiver.
- If you wish to modify what is stored on the Receiver, you may follow 6. **Modifying an Event** and then go to Step 3 and select Receiver, COM Port and then click on the Go button to update receiver
- If you wish to modify and/or save to file, go to Step 3 and select File and then name the file and click the Go button to save to disk.